



TREK

2021 SLASH CARBON & ALLOY
SERVICE MANUAL SUPPLEMENT
Rev 1 January 2022

Table of Contents

Knock block	1
Install the down tube window frame for the storage door	1
Install the drain tube in the down tube	2
Install the main pivot bolt	2
Install the rear derailleur hanger	3
Install the down-tube frame guard(s)	3
Cable routing	4



NOTE

This manual has the unique design features and components for the 2021 Slash carbon bicycle.

Knock Block

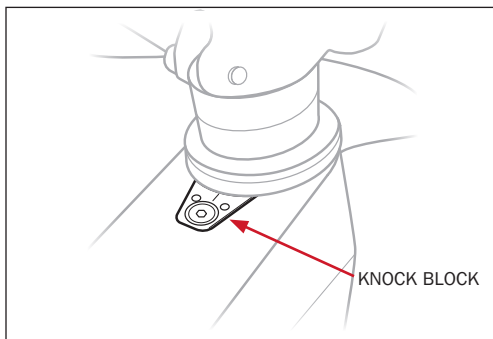
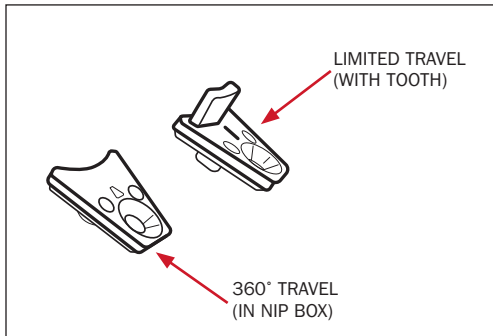
The 2021 Slash carbon has two knock block options:

- Limited travel (with tooth – installed on the bicycle)
- 360° travel (without tooth – in the NIP box)



NOTE

The 2021 Slash 29er uses a new Knock Block assembly (PN 5252160). This is a 67-degree rotation system.



Torque Knock Block fastener to 2Nm.



NOTE

When rotated, most fork crowns will clear the Slash down tube. However to prevent frame damage, the limited travel Knock Block is recommended in cases where the handlebar controls can contact the top tube. The 360 degree chip can be used if there is no interference.

Install the down tube window frame for the storage door

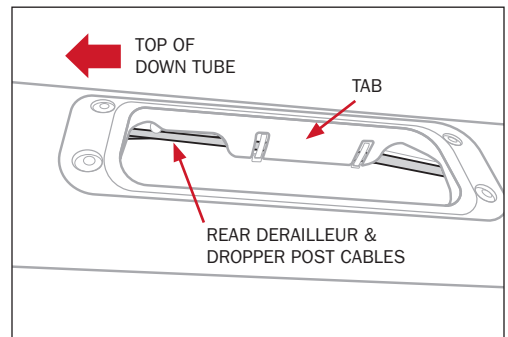
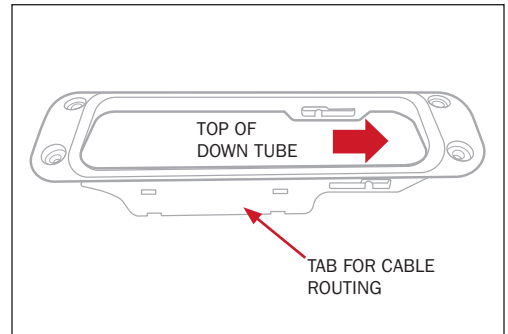
1. Install the window frame in the down tube storage hole.



NOTE

Make sure the cable routing tab is on the drive side.

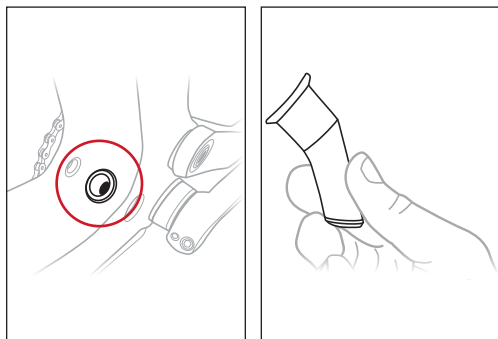
2. Torque the bolts to 1.2Nm.



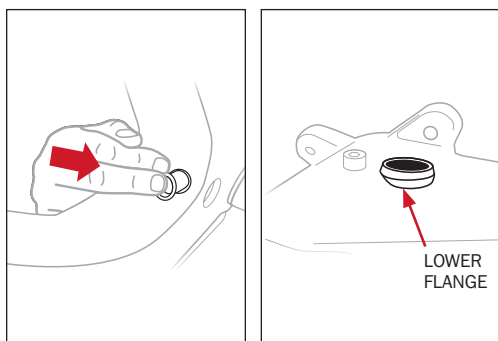
Install the drain tube in the down tube

Carbon only-Alloy does not have a drain tube

The drain tube sits in the down-tube shock-trough.



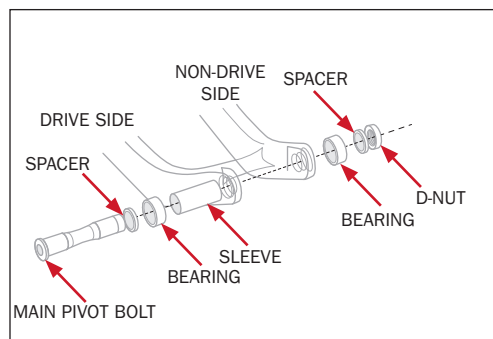
- 1.** Push the drain tube into the trough in the down tube.
- 2.** Position the tube so that the lower flange sticks out of the frame below the trough.



Install the main pivot bolt

- The bolt head is on the drive side
- The D-nut is on the non-drive side.

- 1.** Grease the driveside and the non-driveside bearing bores in the frame.
- 2.** Install the bearing, spacer, and D-nut on the non-drive side as shown.
- 3.** Install the sleeve, bearing, spacer, and main pivot bolt as shown.
- 4.** Torque the bolt to the specification printed on the bolt.

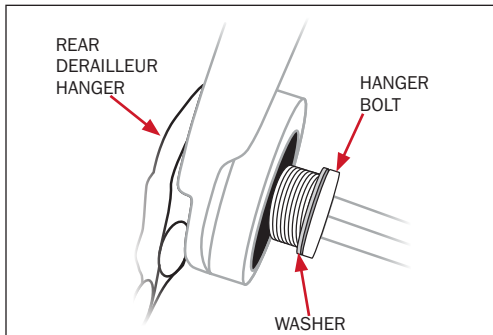


Install the rear derailleur hanger

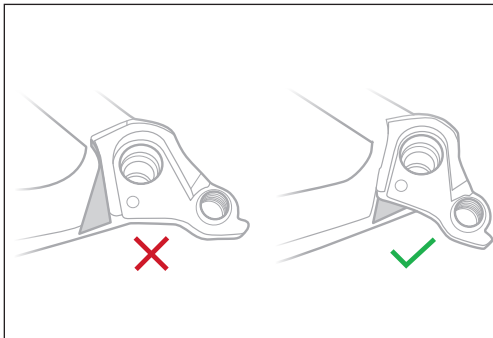
⚠ CAUTION: Do not apply grease between the hanger and the bicycle frame.

⚠ CAUTION: Do not apply grease to the UDH bolt threads.

1. Insert the hanger on the inside of the driveside chainstay and attach with the hanger bolt (left-hand thread).



2. Make sure to have the hanger in the correct position as shown.



3. Torque the hanger bolt to 25Nm (left-hand thread).

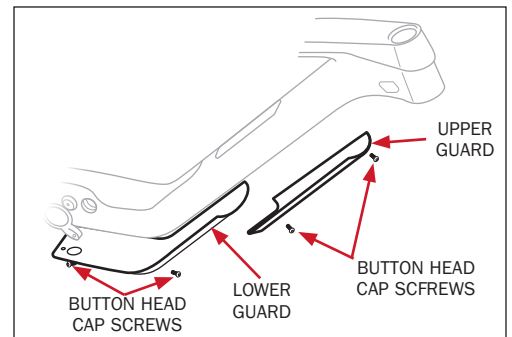
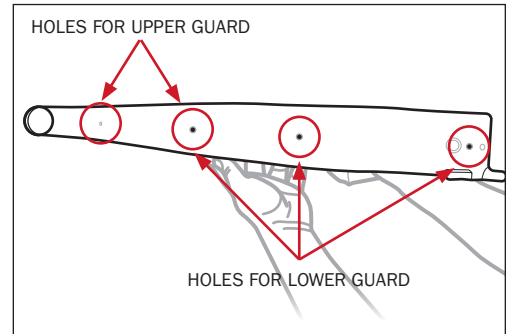
Install the down-tube frame guard(s)

The 2021 Slash has a two-piece guard for the down tube.

Carbon

Use the three holes on the underside of the down tube to:

- Install as one piece (lower), or
- Install as two-pieces (upper and lower)



Alloy

1. Use isopropyl alcohol to clean the frame surfaces that mate with the guards.

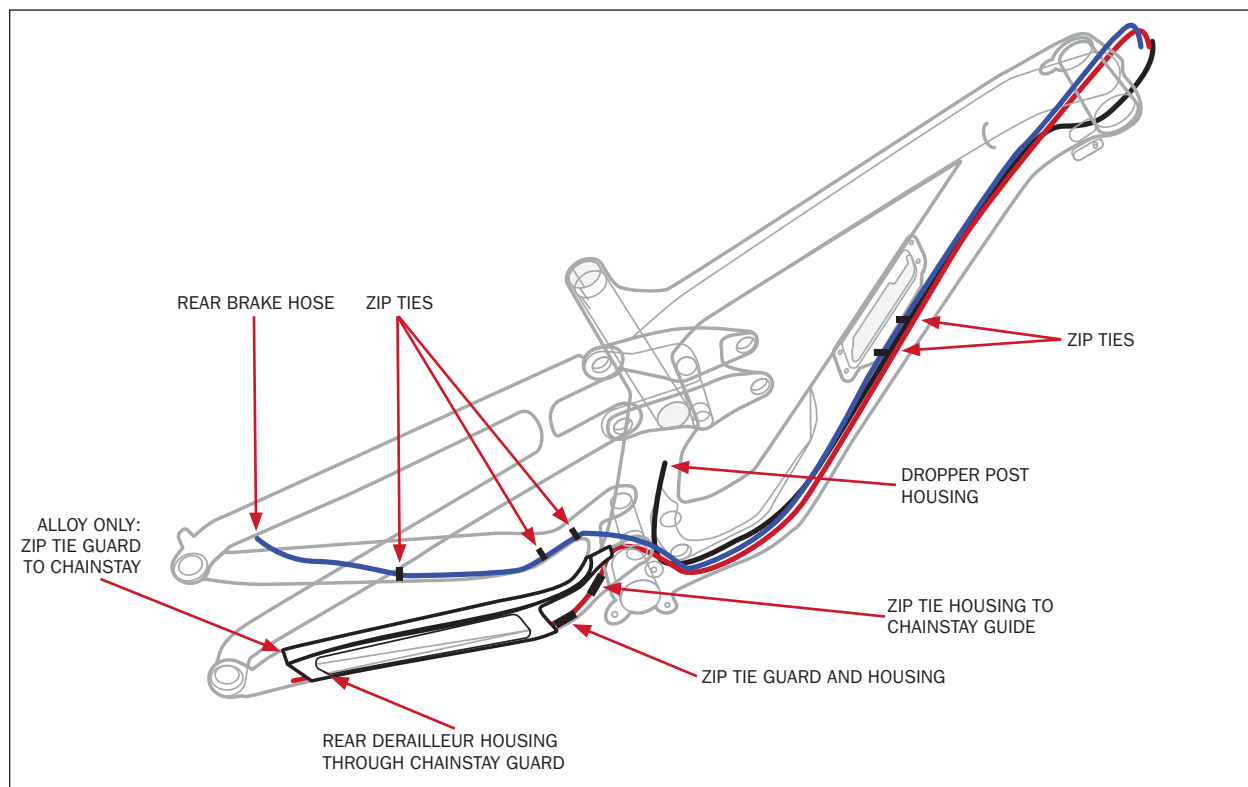
⚠ CAUTION: Do not clean the entire frame with isopropyl alcohol.

2. Remove the protective covering for the adhesive.
3. Attach the guards as shown without screws.

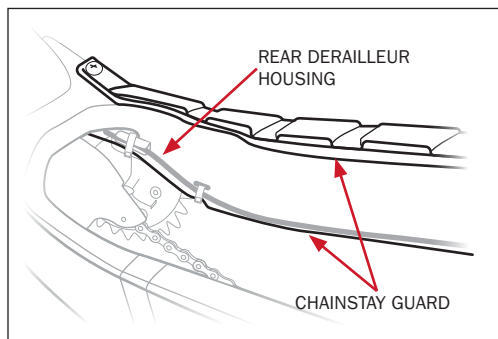
Cable routing

Rear brake and rear derailleur:

- Internal from head tube to bottom bracket, and
- external from bottom bracket to components.



The rear derailleur housing is routed inside the chainstay guard.



Alloy only: Use a zip tie to fix the rear end of the chainstay guard.