

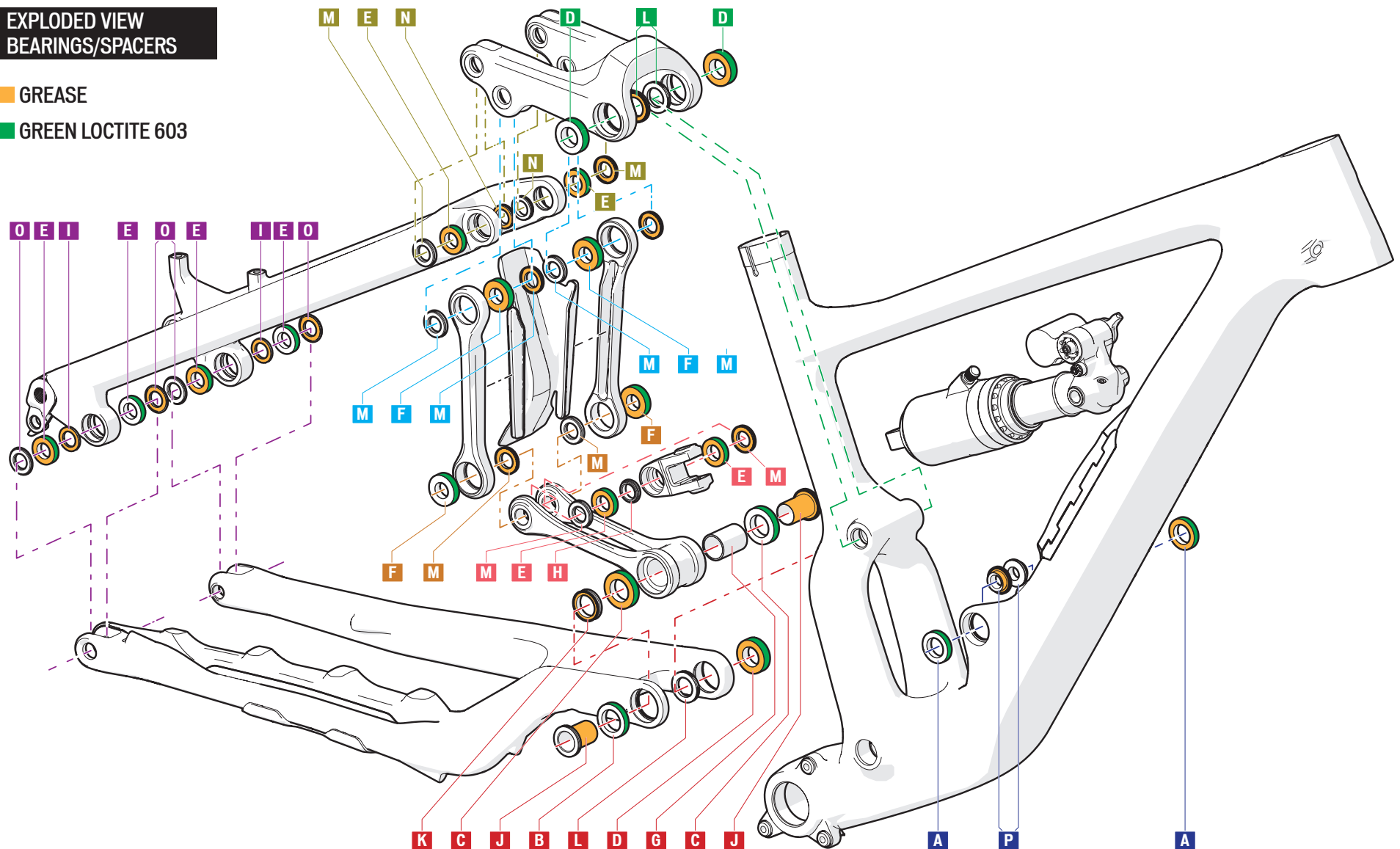
PIVOT PARTS SCHEMATIC ENDURO FSR



EXPLODED VIEW BEARINGS/SPACERS

GREASE

GREEN LOCTITE 603



PIVOT PARTS SCHEMATIC

ENDURO FSR



#	KIT	PIVOT	PART	QTY	MATERIAL	Ø OD	Ø ID	WIDTH	THREAD	LENGTH	TOOL	TORQUE (in-lbf / Nm)	COMMENTS
A	1	FORWARD SHOCK EYE	BEARING (6802V-2RS)	2	Steel	24	15	5					Full complement bearing
B		MAIN	BEARING (6803V-2RS)	1	Steel	26	17	5					Full complement bearing
C			BEARING (17286V-2RS)	2	Steel	28	17	6					Full complement bearing
D			BEARING (15267V-2RS)	1	Steel	26	15	7					Full complement bearing
D		UPPER LINK @ SEAT TUBE	BEARING (15267V-2RS)	2	Steel	26	15	7					Full complement bearing
E		EXTENSION	BEARING (6801V-2RS)	2	Steel	21	12	5					Full complement bearing
E		SEATSTAY @ UPPER LINK	BEARING (6801V-2RS)	2	Steel	21	12	5					Full complement bearing
E		DROPOUT (Horst Link)	BEARING (6801V-2RS)	4	Steel	21	12	5					Full complement bearing
F		MID LINK @ LOWER LINK	BEARING (6901V-2RS)	2	Steel	24	12	6					Full complement bearing
F		MID LINK @ UPPER LINK	BEARING (6901V-2RS)	2	Steel	24	12	6					Full complement bearing

#	KIT	PIVOT	PART	QTY	MATERIAL	Ø OD	Ø ID	WIDTH	THREAD	LENGTH	TOOL	TORQUE (in-lbf / Nm)	COMMENTS
G	2	LOWER LINK	INNER SLEEVE	1	ALLOY	20	17	27.5					Between bearings
H	3	EXTENSION	INNER SPACER	1	ALLOY	17.6	12	5					Between bearings
I	2	DROPOUT	INNER SPACER	2	ALLOY	18	12	2					Between bearings
J		MAIN	SLEEVE	1	ALLOY	23.5	15	27.1					Seal against bearing
J			SLEEVE	1	ALLOY	23.5	15	27.1					Seal against bearing
K			DRIVE SIDE SPACER	1	ALLOY	23	17.1	4.5					Seals against both bearings
L			NON-DRIVE SIDE SPACER	1	ALLOY	23.5	15.1	3					Seal against bearing
L		UPPER LINK @ SEAT TUBE	SPACER	2	ALLOY	23.5	15.1	3					Seal against bearing
M	3	EXTENSION	OUTER SPACER	2	ALLOY	20	12.1	3					Seal against bearing
M	2	MID LINK @ LOWER LINK	INNER SPACER	2	ALLOY	20	12.1	3					Seal against bearing
M		MID LINK	UPPER SPACER	4	ALLOY	20	12.1	3					Seal against bearing
M		UPPER LINK @ SEATSTAY	OUTER SPACER	2	ALLOY	20	12.1	3					Seal against bearing
N			INNER SPACER	2	ALLOY	17.5	12.1	4					Seal against bearing
O		DROPOUT (Horst Link)	OUTER SPACER	4	ALLOY	21	12	2.5					Seal against bearing
P	4	FORWARD SHOCK EYE	SPACER	2	ALLOY	15	10.1	7.5					Seal against bearing



Grease all bearing surfaces before placing the spacers against the bearings. This helps keep the spacers in place when assembling each pivot. Always place the smaller (tapered) surface against the bearing, and the wider surface against the frame or stay.



PIVOT BOLTS: All pivot bolts are factory treated with a one-time use Loctite Dryloc thread coating. If the bolts are removed for maintenance, either clean and apply a new coat of Loctite blue 242 threadlocker, or install new bolts. Only apply grease to the unthreaded portion of the bolt shaft and the inner bolt head surface. Do NOT grease the threads.



For best alignment results, do not torque any of the rear triangle pivot and shock bolts until the rear triangle is fully assembled to the front triangle.

PIVOT PARTS SCHEMATIC

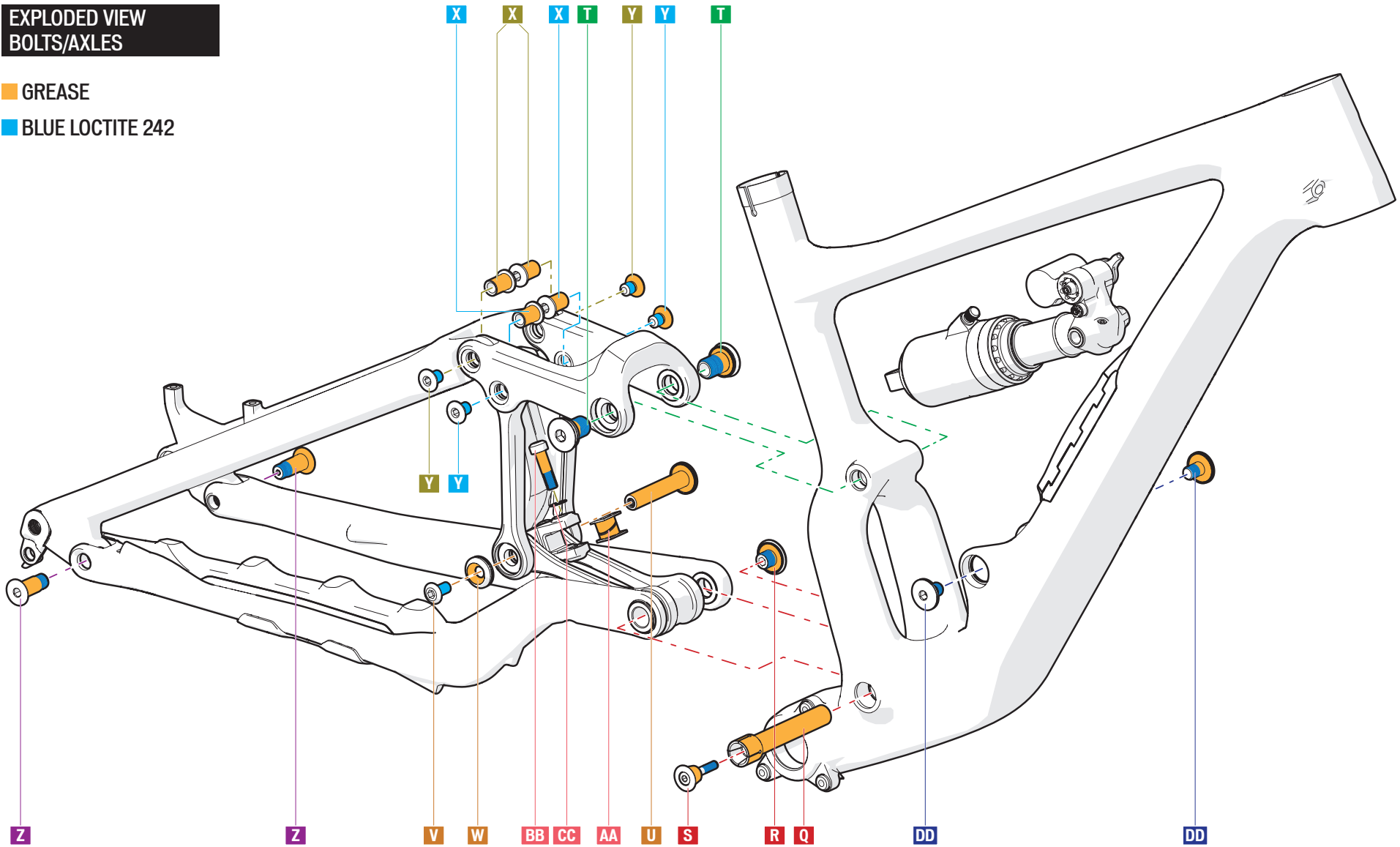
ENDURO FSR



EXPLODED VIEW
BOLTS/AXLES

GREASE

BLUE LOCTITE 242



SERVICE KIT PART #	DESCRIPTION	KIT #
S190600004	BEARING KIT	1
S194200052	BOLT KIT	2
S196300002	SHOCK EXTENSION KIT	3
S194200053	SHOCK HARDWARE KIT	4

PIVOT PARTS SCHEMATIC

ENDURO FSR



#	KIT	PIVOT	PART	QTY	MATERIAL	Ø OD	Ø ID	WIDTH	THREAD	LENGTH	TOOL	TORQUE (in-lbf / N•m)	COMMENTS
Q	2	MAIN	AXLE	1	ALLOY	15				82.9	8mm HEX		
R			BOLT	1	ALLOY				M12	6	6mm HEX	160 / 18	
S			WEDGE BOLT	1	STEEL				M6	30	4mm HEX	62 / 7	Part of wedge assembly
T		UPPER LINK @ SEAT TUBE	BOLT	2	ALLOY				M15	20	8mm HEX	177 / 20	
U		MID LINK @ LOWER LINK	AXLE	1	ALLOY	12				61	6mm HEX		
V			BOLT	1	ALLOY				M8	16	6mm HEX	160 / 18	
W			SPACER	1	ALLOY	23.5	8.5	6					
X		MID LINK @ UPPER LINK	AXLE	2	ALLOY	12				17.5	6mm HEX		
Y			BOLT	2	ALLOY				M9	14	5mm HEX	106 / 12	
X		UPPER LINK @ SEATSTAY	AXLE	2	ALLOY	12				17.5	6mm HEX		
Y			BOLT	2	ALLOY				M9	14	5mm HEX	106 / 12	
Z		DROPOUT (Horst Link)	BOLT	2	ALLOY	12				M11	30	6mm HEX	160 / 18
AA	3	EXTENSION @ SHOCK	FLIP CHIP SPACER	2	STEEL	15	8	6.5					
BB	4		BOLT	1	STEEL				M8	29	6mm HEX	160 / 18	Torque rear shock bolt last
CC			WASHER	1	STEEL	13	8.3	0.5					
DD		FORWARD SHOCK EYE	BOLT	2	ALLOY				M10	15	6mm HEX	160 / 18	

